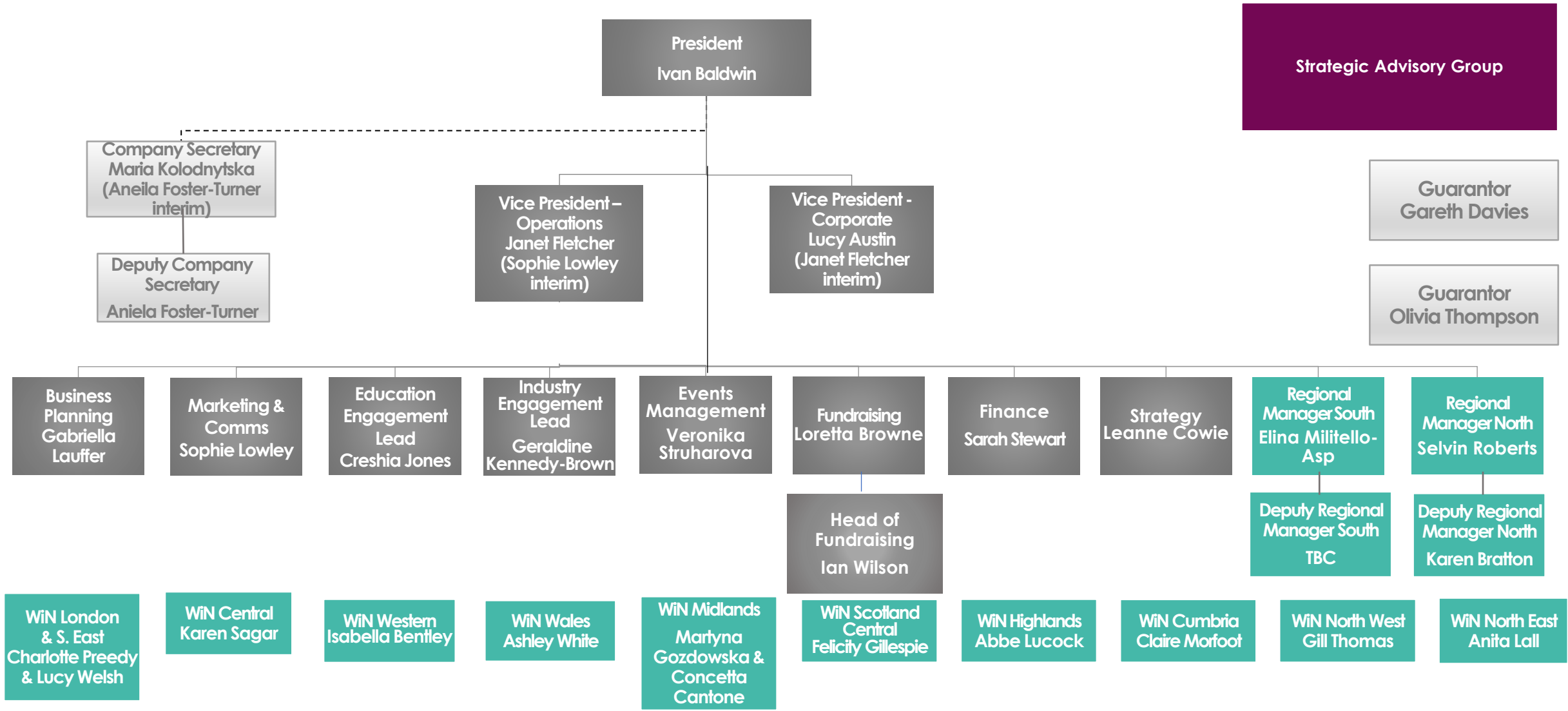


WiN UK STRUCTURE CHART

Updated July 2022



Ambassadors (from WiN UK membership)



Fiona Rayment – NNL
WiN UK Patron

Rachael Glaving - EDF

Rachel Ellison – Mott
McDonald

Lynsey Valentine –
Cavendish Nuclear

Chris Bowbrick - MoD

Carole Jones -
Independent

Jack Grift – WiN Global

Kason Bala - Assystem

Beccy Pleasant - NSSG

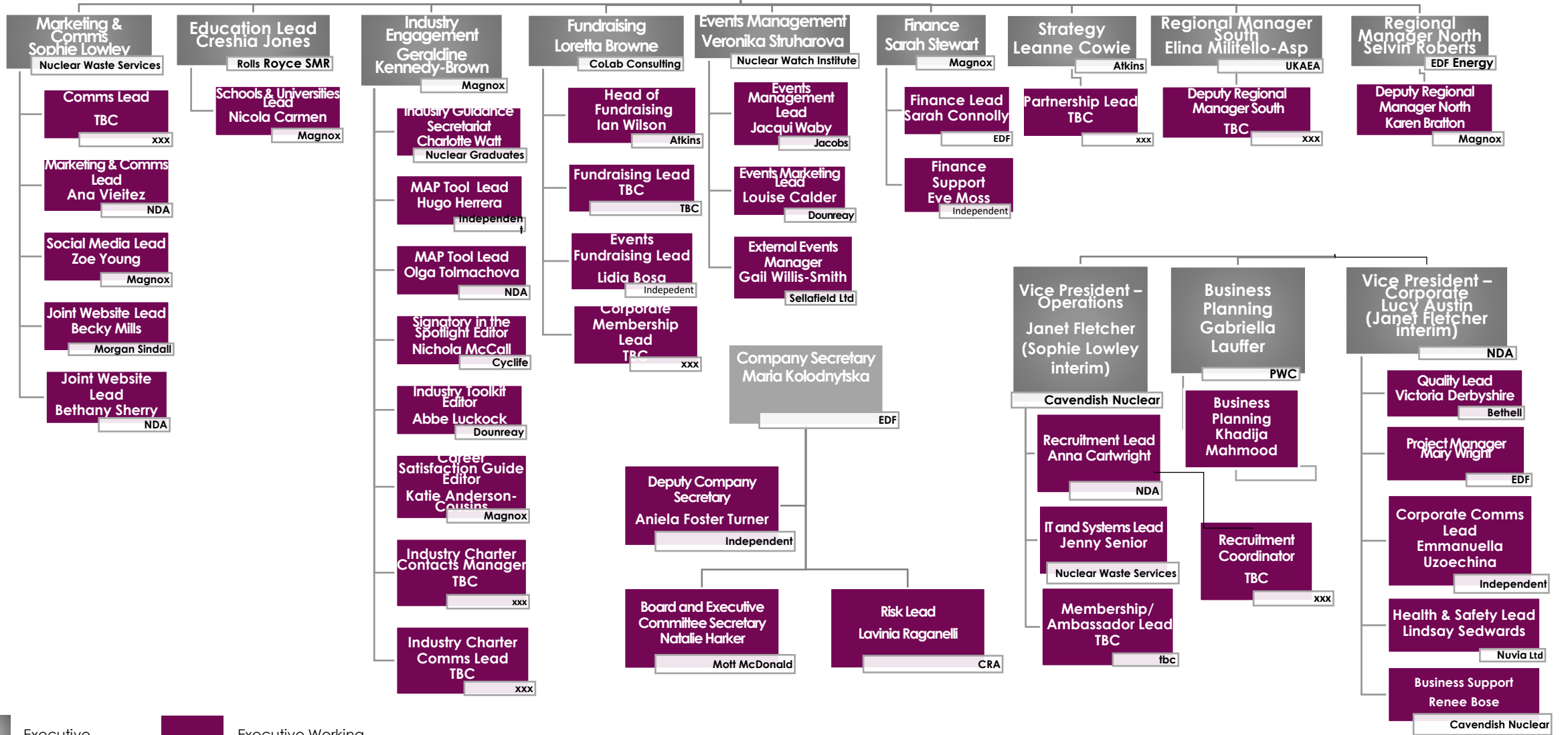
Julianne Antrobus –
PA Consulting

Ambassadors (from WiN UK membership)



Strategic Advisory
Group

WIN UK EXECUTIVE WORKING GROUPS



Executive Committee Members
 Executive Working Group Members

WIN HIGHLANDS REGIONAL TEAM

Regional Lead
Abbe Lucock

Dounreay

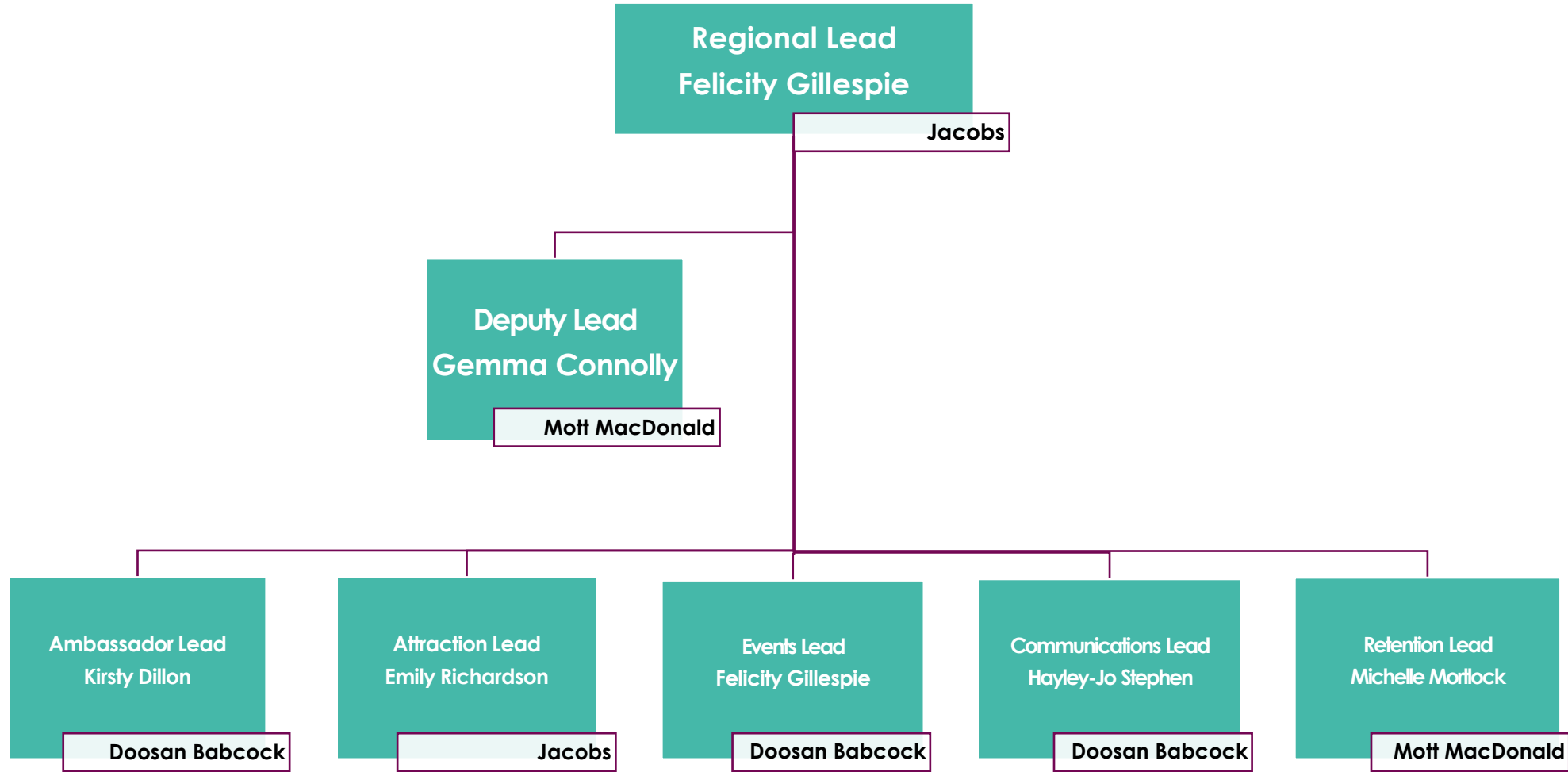
Working in conjunction with
Dounreay's Women Network

WIN UK Regional Teams

Classification: UNCLASSIFIED



WIN CENTRAL SCOTLAND REGIONAL TEAM



WIN UK Regional Teams

Classification: UNCLASSIFIED



WIN CUMBRIA REGIONAL TEAM

Regional Lead
Claire Morfoot

Morgan Sindall

Deputy Lead
Dawn Watson

Sellafield Ltd

Skills Lead
Hilary Royston-Bishop

Sellafield Ltd

Members Lead
TBC

TBC

Events Lead
Zoe Thompson

NDA

Communications Lead
Raveena Deol

Sellafield Ltd

Gender and ED&I Lead
Alan Rankin

Sellafield Ltd

Mentoring Lead
Dawn Watson

Sellafield Ltd

Industry Lead
Clare Macaulay

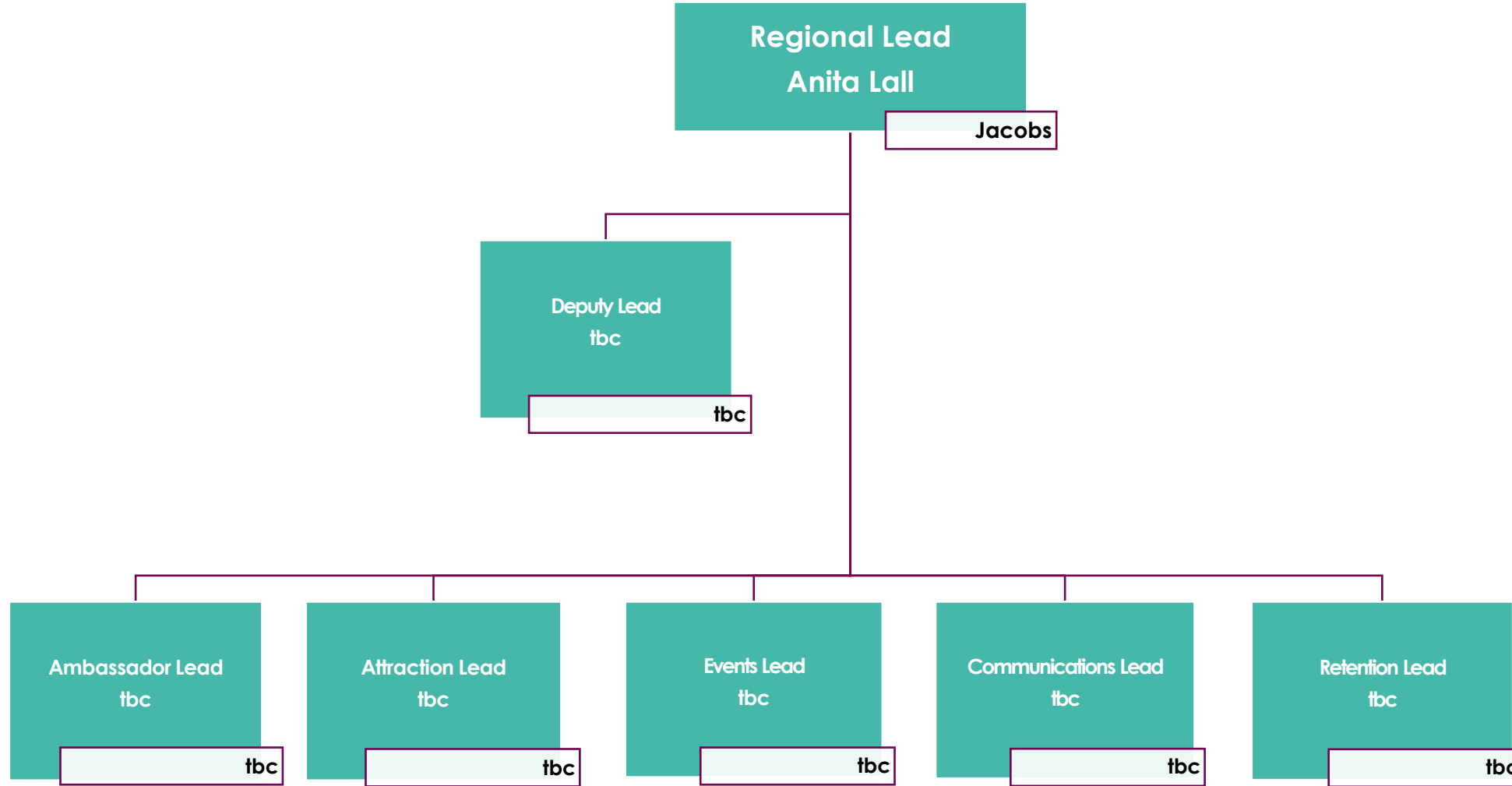
Sellafield Ltd

WIN UK Regional Teams

Classification: UNCLASSIFIED



WIN NORTH EAST REGIONAL TEAM

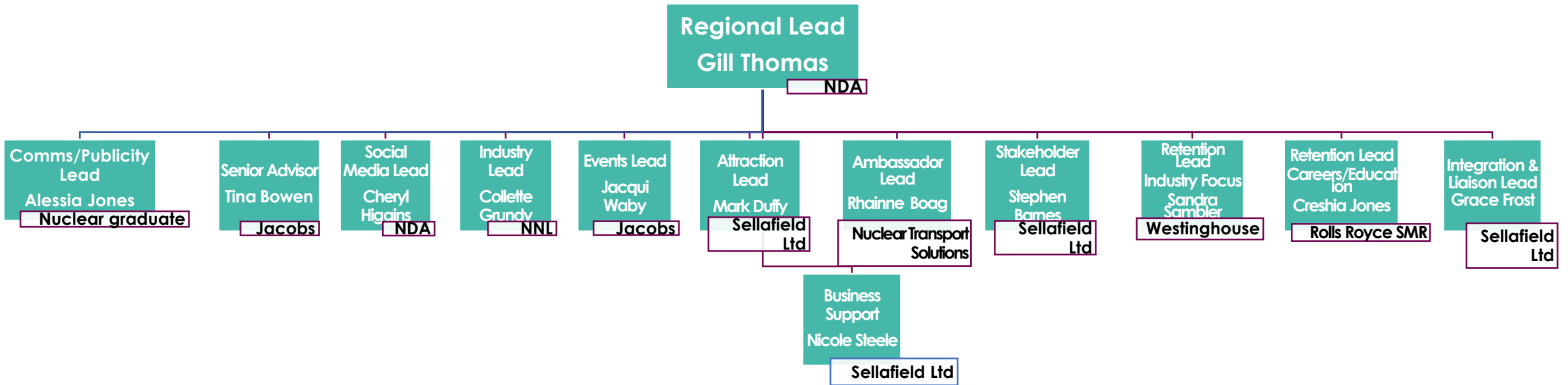


WIN UK Regional Teams

Classification: UNCLASSIFIED



WIN NORTH WEST REGIONAL TEAM

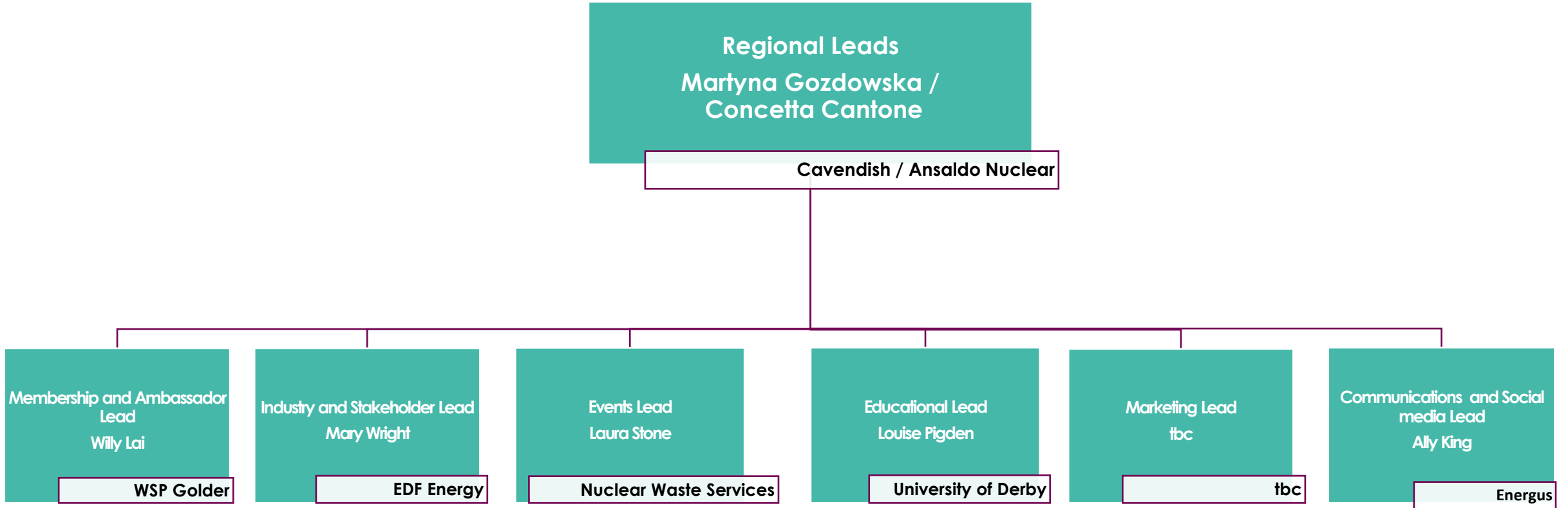


WIN UK Regional Teams

Classification: UNCLASSIFIED



WIN MIDLANDS REGIONAL TEAM

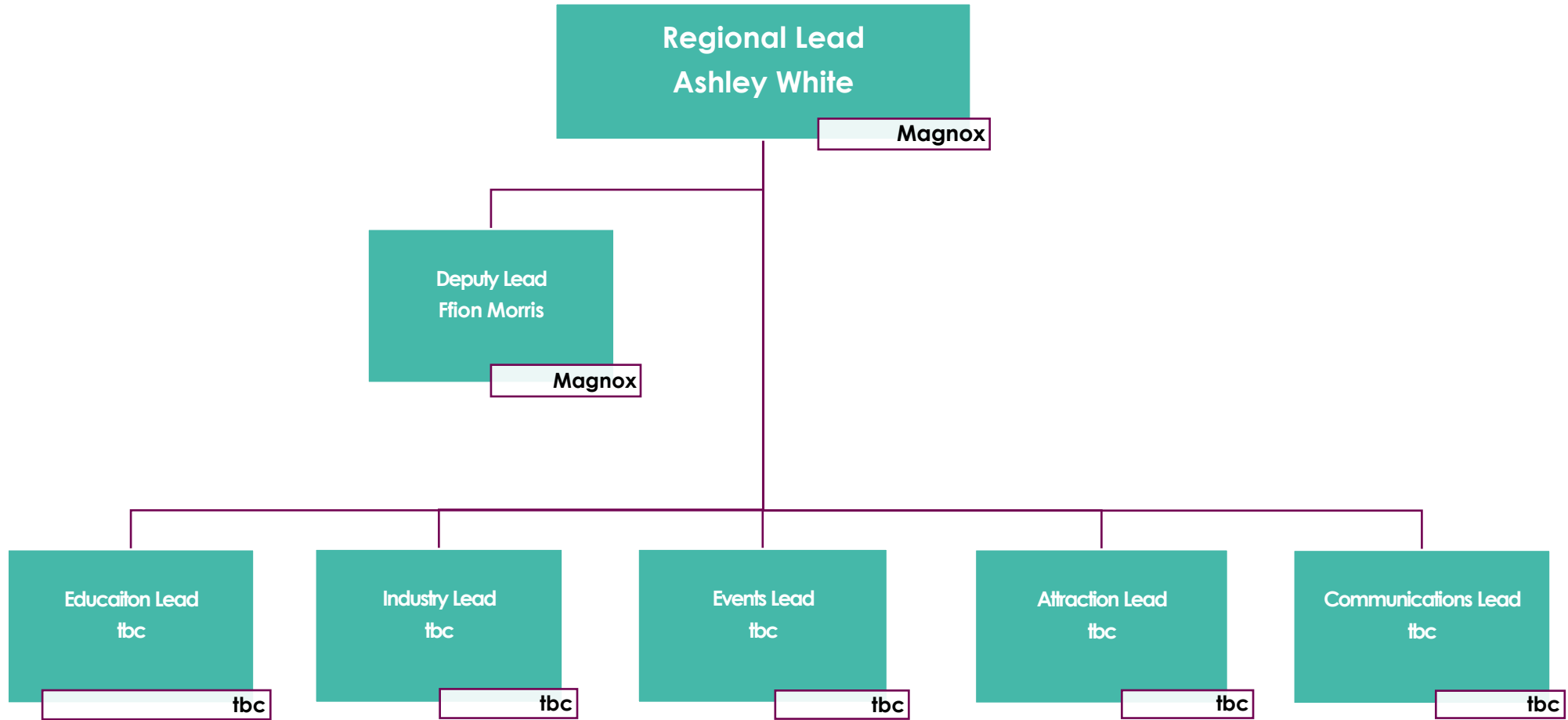


WIN UK Regional Teams

Classification: UNCLASSIFIED



WIN WALES REGIONAL TEAM

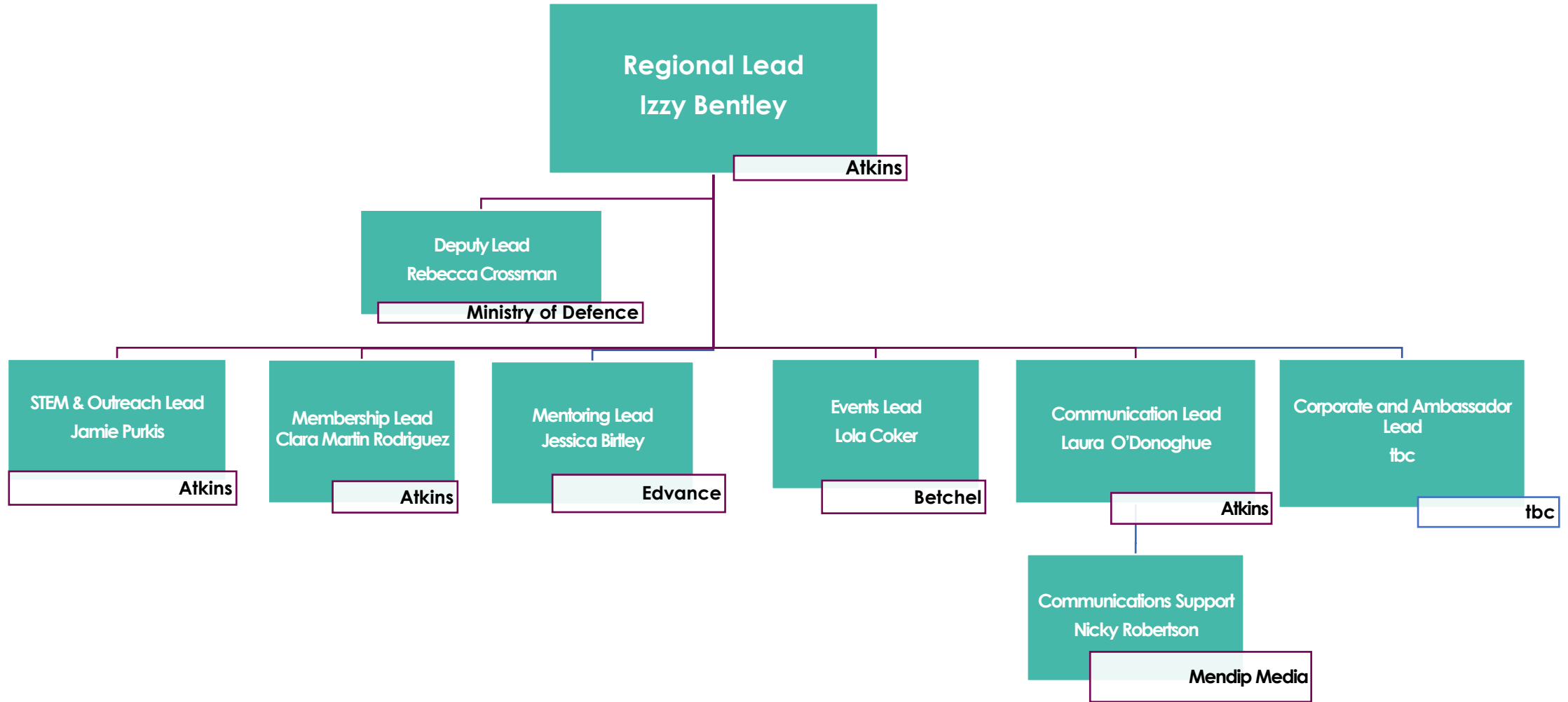


WIN UK Regional Teams

Classification: UNCLASSIFIED



WIN WESTERN REGIONAL TEAM

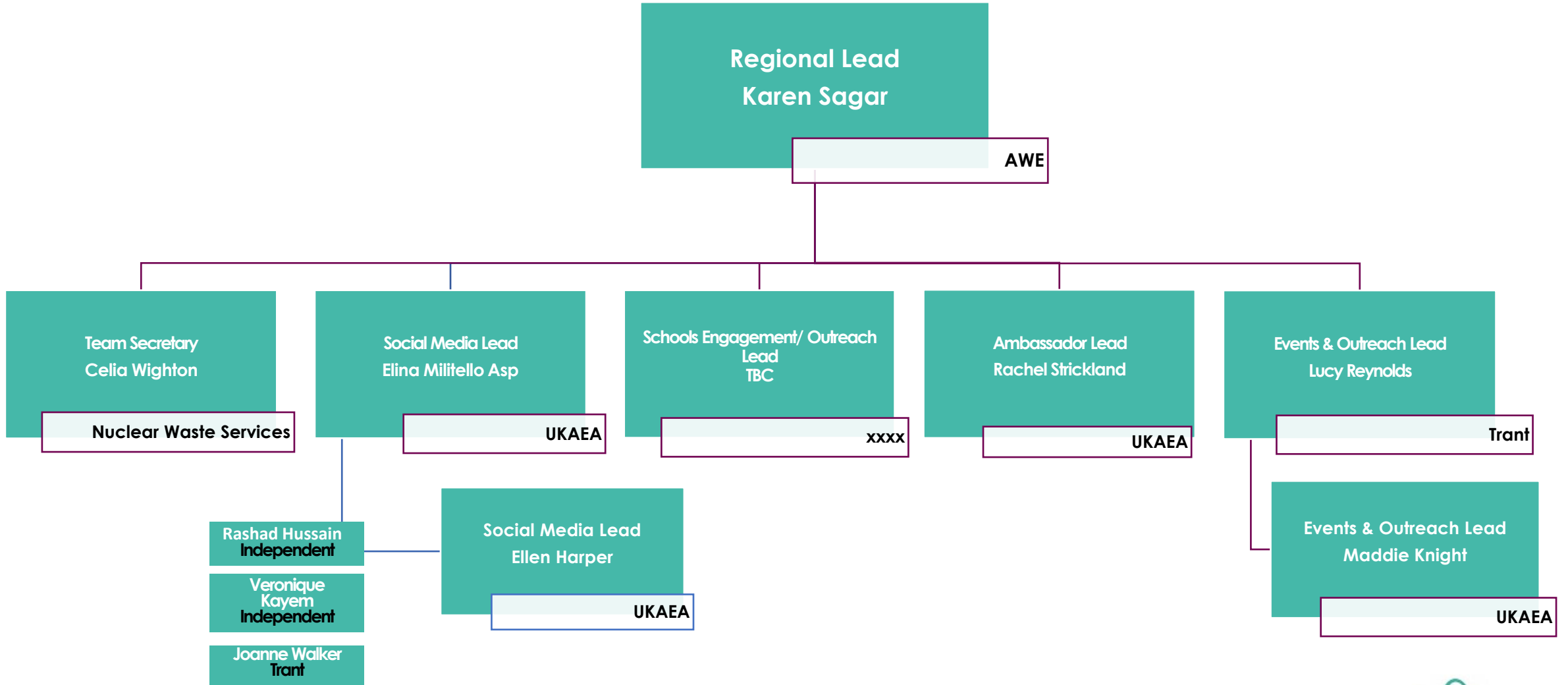


WIN UK Regional Teams

Classification: UNCLASSIFIED



WIN CENTRAL REGIONAL TEAM

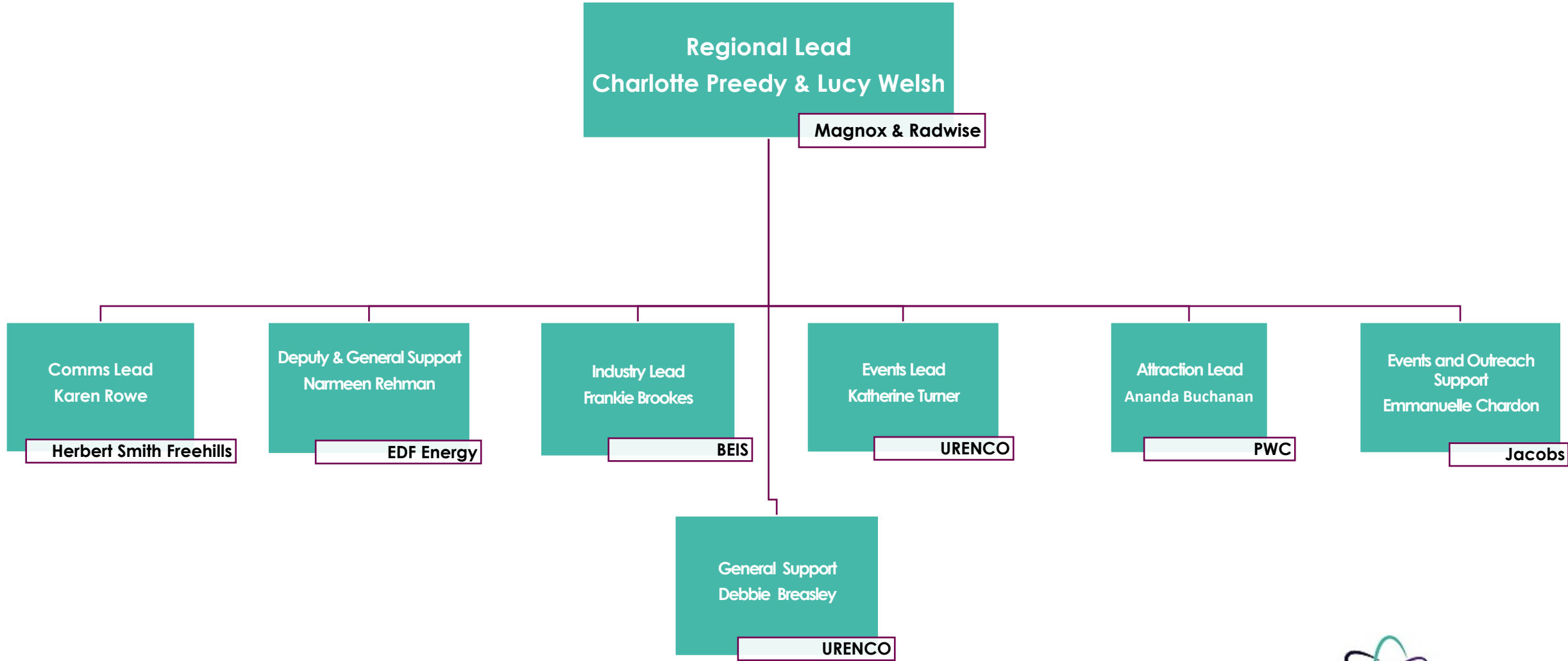


WIN UK Regional Teams

Classification: UNCLASSIFIED



WIN REGIONAL SOUTH EAST AND LONDON TEAM



WIN UK Regional Teams

Classification: UNCLASSIFIED

